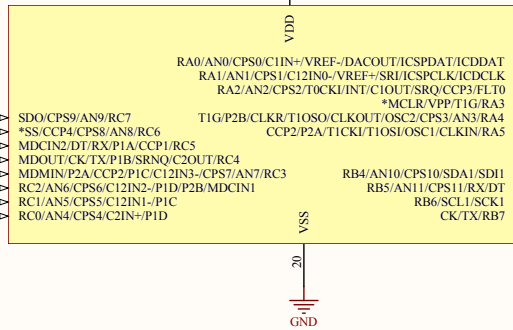
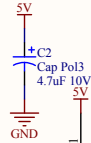
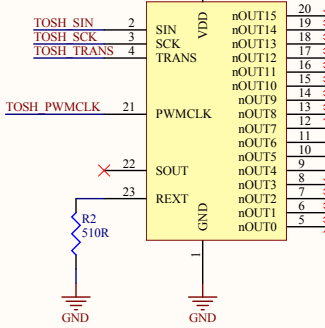
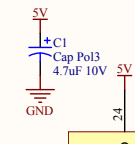


Check Pin allocation for I2C
PIC with flash and self programmable for ID

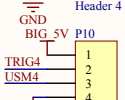
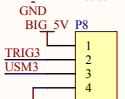
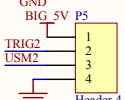
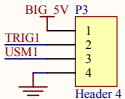
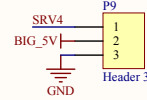
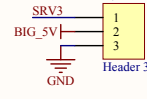
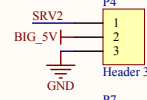
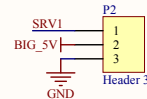
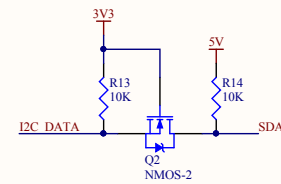
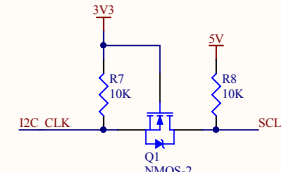
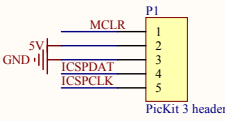
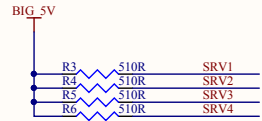


U1
PIC16F1824-I/SL

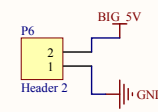
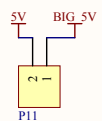
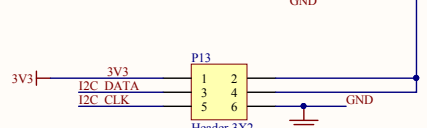
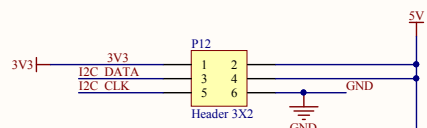
FOOTPRINT HAS HEATSINK



U2
TC62D723FNG



INT/EXT 5V Jumper



Title		
Size	Number	Revision
A3		
Date:	12/02/2015	Sheet of
File:	C:\FRL\...ServoUsm.SchDoc	Drawn By:

Comment	Description	Designator	Footprint	LibRef	Quantity
Cap Pol3	Polarized Capacitor (Surface Mount)	C1, C2	Gen_0805_N	Cap Pol3	2
PicKit 3 header	Header, 5-Pin	P1	HDR1X5	Header 5	1
Header 3	Header, 3-Pin	P2, P4, P7, P9	HDR1X3	Header 3	4
Header 4	Header, 4-Pin	P3, P5, P8, P10	HDR1X4	Header 4	4
Header 2	Header, 2-Pin	P6	HEADER_5MM_X2	Header 2	1
Header 1	Header, 2-Pin	P11	HDR1X2	Header 2	1
Header 3X2	Header, 3-Pin, Dual row	P12, P13	HDR2X3	Header 3X2	2
NMOS-2	N-Channel Power MOSFET	Q1, Q2	SOT23_N	NMOS-2	2
Res3	Resistor	R1, R2, R3, R4, R5, R6, R7, R8, R13, R14	Gen_0805_N	Res3	10
PIC16F1824-I/SL	Imported	U1	SSOP20_MC	PIC16F1828-x_SS	1
TC62D723FNG	16 output constant curr	U2	TSSOP24_N	Toshiba LED driver	1